



## Aiphone GH User Instructions

**Blakeglow Ltd  
Unit A4  
Hastingwood Trading Estate  
35 Harbet Road  
London N18 3HT**

**Tel : 020 8884 2495  
Fax : 020 8345 5883  
Email [office@blakeglow.com](mailto:office@blakeglow.com)  
Web [www.blakeglow.com](http://www.blakeglow.com)**

July 2008 issue 1

## WELCOME

Congratulations on choosing a home fitted with a Blakeglow system.

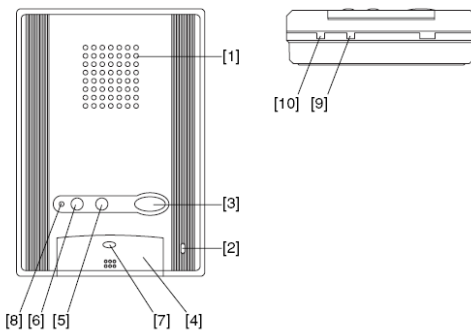
This Owner's Guide is designed to help you get the most from your system.

For the latest product and technical information please visit our website:  
[www.blakeglow.com](http://www.blakeglow.com)

Push buttons and adjustments are as follows.

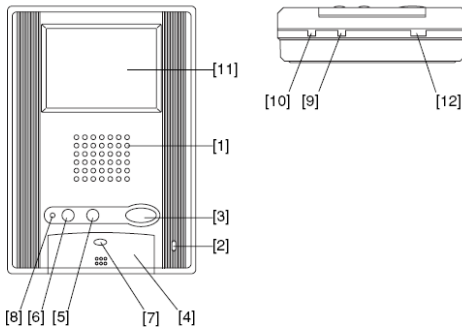
### Residential station (GH-1AD, GH-1KD)

#### GH-1AD



- [1] Speaker
- [2] Microphone
- [3] Door release button / Monitor button (GH-1KD only)
- [4] Talk button
- [5] Light button / Security guard station call button
- [6] Service button (option)
- [7] Talk LED
- [8] Call tone off LED
- [9] Receive volume control
- [10] Call tone volume control
- [11] Video monitor 3.5 inch color LCD
- [12] Monitor brightness control

#### GH-1KD



## Replying to a Call

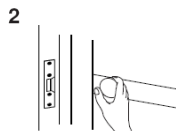
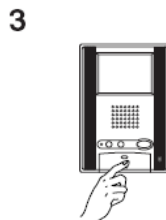
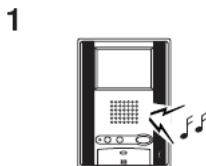
1. When the call is from an entrance station or security guard station, the call tone will ring at the residential station for approximately 10 seconds. An image will be displayed on monitor residential station.
2. On the residential station, press the talk button within the set time (see 8-6, menu 5, 9-2, menu 4) to respond and talk handsfree. The LED lights when you talk, and goes off as you listen to the caller.
  - If you press the talk button for at least one second while talking handsfree, a beep will be emitted and you can communicate by press-to-talk communication.
  - In press-to-talk communication, you press the talk button to talk and release it to listen.
3. When you are done talking, press and hold down the talk button.

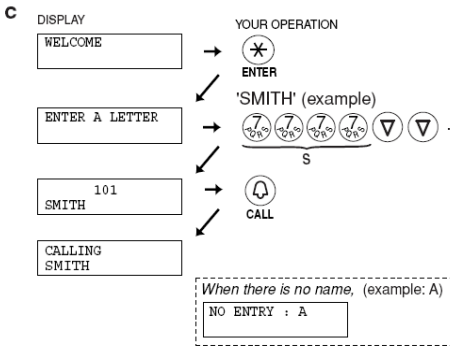
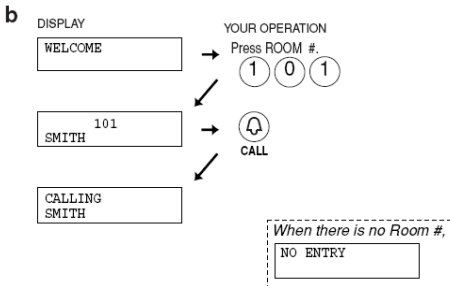
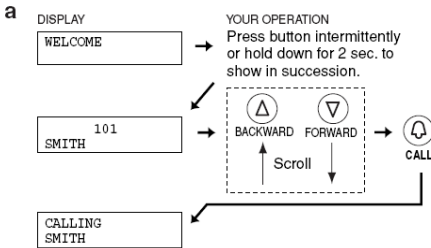
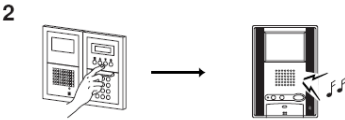
\* The communication will be ended automatically after approximately 1 minute when handsfree communication is used at the residential station or after approximately 3 minutes when a handset is used.

NOTE: When "call tone volume control" is put in MUTED position, "Call tone off LED" on GH-1KD & GH-1AD and TALK LED on GH-1MD blinks at 5 second intervals.

## Door Release

1. Press the door release button while in communication.
2. The door release function will activate on the entrance station that is in communication.





## Your Visitors

Visitors may contact you from the main entrance by calling you on the door entry system by dialling your apartment number on the call panel

### 1. Direct Selection GH-SW

Press the call button for the residence that you want to call. You will hear a low-volume call tone from the entrance station.

### 2. Digital name scrolling GH-NS

Display the resident name you want to call and press the call button. You will hear a low-volume call tone from the entrance station.

a. Making a call by name scrolling

b. Making a call by entering the room number

c. Making a call by entering letters and selecting the corresponding name

NOTE: If you push a call button that has been programmed to activate a light, the entrance light will turn on. (GH-SW only.)

Once the number has been dialled into the call panel, the number is displayed on the panel readout. Should your visitor dial the wrong number, then they can reset and start again by pressing the "R" button. unit.